



LAINE THEATRE ARTS

The Studios

East Street

Epsom

Surrey

KT17 1HH

Tel: +44 (0)1372 724648

Fax: +44 (0)1372 723775

Audition queries: [auditions@laine-theatre-arts.co.uk](mailto:auditions@laine-theatre-arts.co.uk)

General queries: [info@laine-theatre-arts.co.uk](mailto:info@laine-theatre-arts.co.uk)

Over 40 years of performing arts excellence



[www.laine-theatre-arts.co.uk](http://www.laine-theatre-arts.co.uk) 01372 724648 [info@laine-theatre-arts.co.uk](mailto:info@laine-theatre-arts.co.uk)



# A life-long career in performing arts

**Laine Theatre Arts** provides an exceptional training for anyone who wants a long career in professional dance and musical theatre. Founded in 1974 in Epsom, Laine is simply one of the best international training colleges for performing arts.

**Betty Laine OBE** founded Laine Theatre Arts after a successful career as a dancer, singer and actress. She is a Fellow and member of the Grand Council, of the Imperial Society of Teachers of Dancing and an Associate of the Royal Academy of Dance.

**“My vision** for Laine Theatre Arts is musical theatre training in its broadest sense, in readiness for embarking upon the world of entertainment with confidence in the knowledge that students are totally prepared.

**“Our training** provides preparation for a life-long career. Our graduates not only have exciting and fulfilling careers in musical theatre, television, contemporary dance companies and legitimate theatre, but often become notable choreographers, directors, teachers, lecturers and examiners.

**“Our teaching staff** comprises the highest-calibre specialists in their genres, respected for their expertise throughout the profession. Students are tutored by encouragement and genuine care for their individuality.”

**Betty Laine OBE, principal & founder**





# Outstanding musical theatre training

*“Laine Theatre Arts is a driving force in the dance and musical theatre world. Their graduating students are excellent, with a faultless dance technique and work ethic that makes them highly employable. The students can look forward to a successful future in the performing world. A school of excellence.”*      Andrew Wright – West End Choreographer

Laine combines its considerable theatre heritage with up-to-the-minute performance techniques and training. Students learn their skills through both practice and performance, with a strong emphasis on discipline and learning how to meet any occasion encountered with confidence.

A modern studio theatre and workshop performance space within the College complex allows for in-house productions in a wide range of styles – musical theatre, opera, plays, classical ballet and contemporary dance - throughout the college year. These productions are attended by theatre managements, directors, casting agents and choreographers giving students valuable exposure to the profession.

Today the College boasts an enviable list of alumni with many of its graduates starring in the West End, working in television and film and recorded media as well as those who have established an international reputation working in many different countries of the world.

Students are encouraged to direct their natural talents in all aspects of musical theatre to develop the skills required for their chosen career and to work together in an atmosphere of mutual understanding and involvement. The objective of our courses is to prepare students for employment in the entertainment industry as ‘triple threat’ musical theatre performers and to enable each student to achieve the highest possible standard of professionalism.





## Developing your theatrical potential

*“Laine Theatre Arts is a fantastic college and is great for an all-round training which prepares you for the working industry; I had a great training there. It produces amazingly talented performers and I have gone on to employ some of the students and graduates in my show at the Royal Albert Hall.”*

**Kerry Ellis West End Star and Recording Artiste**

# Putting dance right at the heart

Whilst we work across the three core musical theatre skills of dance, singing and acting with all students, dance is central to our ethos.

Most professional musical theatre auditions begin with a dance audition and invariably graduates, whether they specialised in singing, acting or dance will need to pass this audition before proceeding to the next stage. Dance is therefore a core skill at Laine.

There is the opportunity for specialisation and students are encouraged to appreciate and learn from each other’s talents.

The College is accredited by the Council for Dance Education & Training (CDET) and the course is validated by Trinity College London and is a founding provider of Dance and Drama Awards.

*“The training at Laine Theatre Arts is second to none! It allows you to dream, makes you believe and helps you to achieve.”*

**Matt Flint – winner of ‘So You Think You Can Dance’ 2011, Choreographer Great Britain and Los Angeles, Choreographer Strictly Come Dancing**

Dance and dance technique alone are not enough. Performers have to demonstrate they can dance, sing and act together in order to become a ‘triple threat’ performer. Laine courses ensure you acquire the necessary skills to combine the disciplines and develop your skills as a ‘triple-threat performer’ - that is, someone who can dance, sing and act and, more importantly, do all three at the same time!



Graduates can be seen in almost every current West End show, in lead roles in the West End, Wicked, Cats, The Book of Mormon, Memphis, 20th Century Boy, Matthew Bourne's Swan Lake, Singin' in The Rain, Top Hat, Gypsy, Anything Goes, Jersey Boys, Matilda, Billy Elliott, Rock of Ages, We Will Rock You, Dirty Dancing, West Side Story, the list is endless. Graduates appear Internationally and on Cruise ship productions, on film and television, commercial dancers, models, singers, Emmerdale, Hollyoaks, Coronation Street, Miranda, Strictly Come Dancing, That Day We Sang, Dancing on Ice, The Job Lot, The Bill, The Voice, So You Think You Can Dance etc. Graduates also make up creative teams as producers, directors, choreographers, casting directors, some even enter the world of fashion, the most famous being Victoria Beckham.

# Our talented students & graduates

Laine graduates have enjoyed success in all areas of the entertainment business, appearing in West End and touring musicals, as well as stage productions throughout the world. Some graduates also diversify into straight theatre including seasons with The Royal Shakespeare Company and The National Theatre.

Overseas, graduates are currently appearing in the US, Germany's thriving musical theatre industry and also at Disneyland and Universal Studios in Japan. Additionally with the increased quality and number of production shows on board top Cruise Lines and in luxury hotels many graduates are working throughout Europe and the rest of the world.

Every student has their own timetable created to ensure they get the best possible classes to develop and improve their skills and creativity. The College promotes a family atmosphere and the Principal, Betty Laine, gets to know every student by teaching and observing classes and workshops.

**We are very proud of our many graduates who achieve great successes in the music, film and television industries.**



We also offer Easter and Summer Short Courses and Laine has an exceptional Children's Training Department including a Junior Squad and a scheme for the outstandingly talented.

*"Laine Theatre Arts teaches to a very high standard in all aspects of performing arts. The teachers are inspirational and prepare students for the real world with absolute dedication and precision."*

**Stephen Mear, patron, West End and Broadway, Choreographer and Director**

# Our committed faculty & staff

The Faculty is made up of 50 of the best practitioners and teachers in the business, specialists in their genres, who share a wealth of knowledge about the dance and musical theatre world.

These highly respected teachers ensure the students get the most gratifying learning experience. Some of the teachers are Laine graduates who understand, and are part of, the ethos and mission of the College.

You will meet expert teachers in singing and acting and professional coaches still working in the West End who will teach you and give you the benefit of their experience.

# Our courses of study

Laine provides second to none vocational training (Minimum age 16) at every stage of preparation for a long career in the Performing Arts.

The College offers a one year Foundation Course, a three year professional Diploma Course specialising in either Dance or Musical Theatre and a BA (HONS) Musical Theatre (top up) validated by UCA. Each student is given personal attention focussing on their individual talents enabling them to graduate with water tight professional confidence, secure in the knowledge that they are prepared for whatever the industry demands of them.





# The Core Disciplines

**Dance:** The foundation of all dance is ballet and all students have classes in classical ballet with the option to study further for those who have a particular aptitude and skill level. Other dance classes include; tap (free-style and American) / contemporary dance / pas de deux / jazz / Modern Dance / Pilates and gymnastics (gymnastics for male students only).

**Singing:** Expert tuition in the art of professional musical theatre singing is an essential part of every student's course. Specialist teachers work with students individually and in groups. Practical classes include: vocal development, harmony, music rudiments and sight-reading, audition presentation, musical theatre repertoire and performance technique.

**Acting:** Acting is core to every subject and class taught at Laine. Whether it be singing a ballad or performing detailed choreography or reciting verse; students need to know how to act through song, dance and text. There are practical classes on improvisation technique, scene study, sight reading, basic acting techniques, advanced acting and acting for the screen.

## Optional classes include:

- Classical Ballet: Major syllabuses of the Imperial Society of Teachers of Dancing and the Royal Academy of Dancing, including Solo Seal
- Modern Theatre Dance: Major syllabuses of the Imperial Society of Teachers of Dancing and Imperial Classical Ballet or Modern Theatre Dance DDI (units 4 and 5)



*"Laine has set standards in the profession that have been impossible to beat. I am immensely proud to be a patron of LTA and to have worked closely with Betty Laine OBE and so many of her wonderful artistic staff and students."*

Derek Deane, patron - Choreographer

# Professional Training

## FOUNDATION COURSE

Intensive 28 week course designed to give the necessary skills to gain entry into a specialist college. Focusing on a strong technical skill base underpinned with knowledge and understanding, developing the ability to instil life into their performances and understanding the relationship between vocational training and the job market.

## LEVEL 6 DIPLOMA IN PROFESSIONAL DANCE OR MUSICAL THEATRE

A pioneering three year course validated by Trinity College London preparing students for a life-long career in the performing arts. Contrary to fast-track courses this training covers every aspect of the performing arts necessary for a successful career majoring on a student's individual talents.

## BA (HONS) MUSICAL THEATRE (top up) Course

Validated by the University for the Creative Arts

One year top up course will enable students with a Trinity College Diploma in Professional Dance or Professional Musical Theatre or significant professional experience to convert it to an Honours Degree. Recently developed by top professionals, this practice-based course will open up new opportunities and give flexibility in changing career path. Unique and exciting content designed to fit in with work patterns and give a greater understanding of the genre through modules in Performance, Research Practice and Choreography for Musicals. Taught in a variety of contexts including weekend workshops, rehearsals, group classes, individual tutorials, self-directed study and performance. Students will be expected to attend one or two week blocks during the holiday breaks and some weekends during the academic year.





*“Betty Laine’s energy and passion are second to none in our industry. When we see that a student is “trained at Laines” we know that they have been trained to the highest standard of a “triple threat”. You inspire your staff to continue the excellence of Laine Theatre Arts. Long may it continue. I am honoured to be a Patron.”*

**David Grindrod, patron - Casting Director**

# Joining the Laine Community

Encouraging students to become part of the local community, as well as being part of the Laine community, is central to everything that we do.

## **Applying to Laine Theatre Arts**

The College actively encourages applications from a wide range of backgrounds and promotes diversity and equality in everything it does.

Entry to the College (for Foundation and Diploma Course) is by audition only, and all new applicants are offered the opportunity to audition. Great importance is placed upon the individual ability and potential of each applicant and this is thoroughly assessed through the audition process. Information about audition requirements can be downloaded via our website and you can apply for audition online.

Auditions are held throughout the academic year, starting in the autumn half-term.

## **Audition support**

You can visit Laine Theatre Arts on a one-day audition support course offering guidance in auditioning for full time training. Our expert staff will guide you through a typical audition day and valuable advice and assistance will be given in a friendly, learning environment.

Your day will include a ballet, a jazz and a singing class. There will also be the opportunity to ask questions regarding the audition day and entry to Laine Theatre Arts.

Please see our website for more information about current audition dates and preparation days.



*“Forty years of Laine and counting! How does an idea for a dance school develop into a dance giant producing dancers and performers scooping up top jobs in musical theatre, films, TV, dance companies and choreography? By the feat of one formidable woman, Betty Laine! Forty years of tireless innovation into the teaching of show business. That’s how.”*

**Arlene Phillips CBE, Patron, Choreographer**

# Living in Epsom

Epsom is close to London (Waterloo 36 mins & Victoria 36 mins) making trips to the West End very easy.

The College has an accommodation list which is available, after the recall auditions, to all prospective students.

Accommodation ranges from lodgings with families, bedsits, specially designed student accommodation and shared flats and houses.

Epsom is a busy market town and students find part-time work locally. The nearby leisure centre has a swimming pool, gym and other sports facilities.

## **Work in the community**

Laine students are often asked to perform at social functions and events including performances at the Royal Albert Hall and other prestigious venues.

The College is actively engaged with local community groups which support children with special needs and vulnerable adults. Students and tutors work with these groups by providing performing arts opportunities and workshops.

# Laine Theatre Arts

LAINÉ THEATRE ARTS

The Studios

East Street

Epsom

Surrey

KT17 1HH

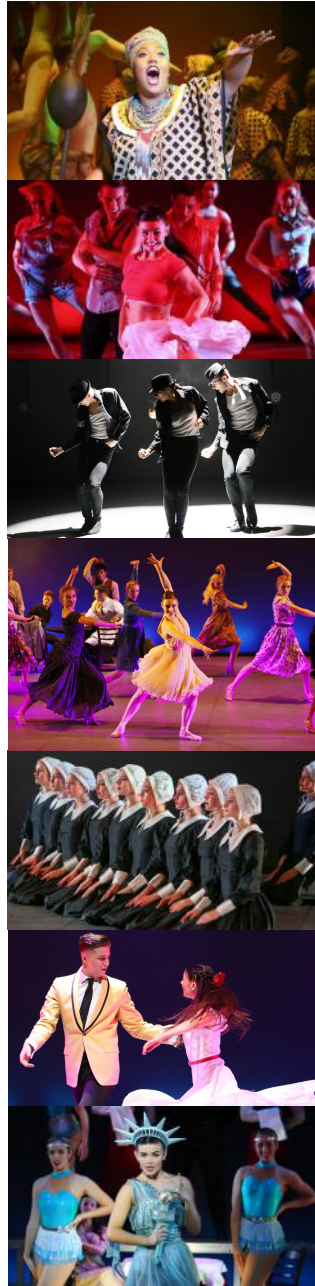
Tel: +44 (0)1372 724648

Fax: +44 (0)1372 723775

Audition queries: [auditions@laine-theatre-arts.co.uk](mailto:auditions@laine-theatre-arts.co.uk)

General queries: [info@laine-theatre-arts.co.uk](mailto:info@laine-theatre-arts.co.uk)

[www.PhotoViva.co.uk](http://www.PhotoViva.co.uk)





*Laine* | Theatre  
Arts